

**High-performance
heatpump tank (10 bar)**

HRS

200 / 300 / 400 /

500 LITRE

“

**Particularly suitable
when large quantities
of hot water is required.**

Example: Hotels

”

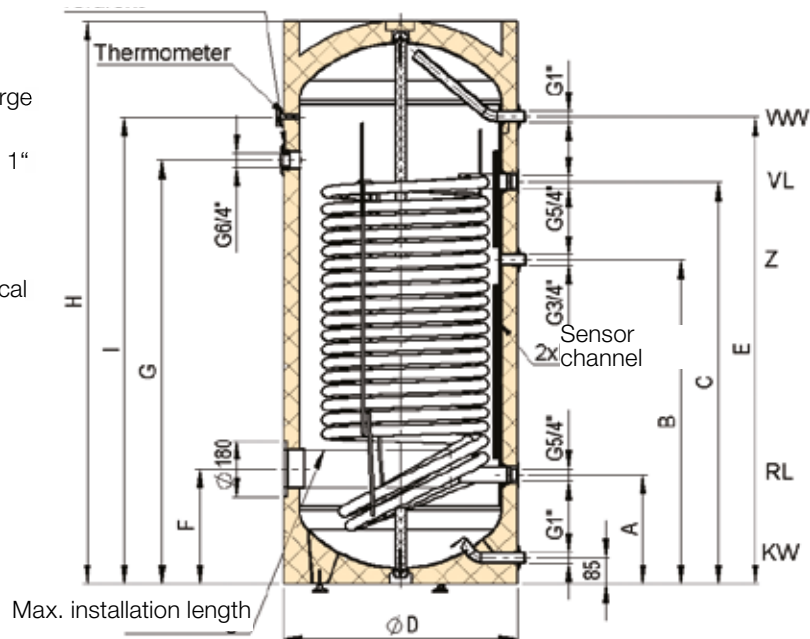


HIGH PERFORMANCE HEAT PUMP TANK

TECHNICAL DATA

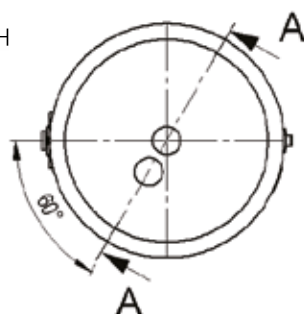
- Operating pressure: max. 10 bar
- Capacity: 200 L, 300 L, 400 L, 500 L
- Energy-saving PU foam insulation
- Smooth-tube heat exchanger with particularly large heating surfaces
- Circulation: 3/4" male thread for HRS 200 - 400, 1" male thread for HRS 500
- Variable sensor position (sensor channel)
- High-quality dial thermometer
- 6/4" socket for screwed radiator „SH“ for electrical reheating (closed adjustable feet)

500 litres as shown
300-400 litres twisted
by 60 mm



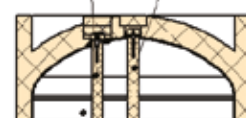
ACCESSORIES

- Supplied with foil sheath, thus reduced storage
- Attached thermometer-loading pump-regulator combination ATR
- Flange-mounted heater Ø 180 mm
- Screw-type heating element 6/4", type series „SH“
- External current anode (retrofit kit)
- Finned-tube heat exchanger
- Optionally available in white or silver-grey



Cut A-A

magnesium anode 500 lt
magnesium anode 300-400 lt



ECO DESIGN-LABELING

✓ 7 YEARS WARRANTY
ON THE INNER BOILER

Type	Heat loss according to EN 12897		Tapping profile	Energy efficiency class
	in kWh/24h	S in watts		
HRS 200	1,37	57,1	XL	B
HRS 300	1,53	63,8	XXL	B
HRS 400	1,76	73,3	XXL	B
HRS 500	1,90	79,2	3XL	B

TECHNISCHE DATEN

Type	Article no.	Dimensions in mm									Heat exchanger surface m ²	Tilt-dimension in mm	Content Pipe register in l	NL number according to DIN 4708	ETE in mm	ETF in mm	Weight in kg
		H	Dø	A	B	C	E	F	G	I							
HRS 200	A 223 29	1295	610	305	730	840	1057	305	1067	980	2,5	1450	16,2	7,0	6/4"/500	180/375	115
HRS 300	A 225 33	1435	680	320	840	990	1160	345	1156	1050	3,5	1595	22,6	14,1	6/4"/545	180/450	170
HRS 400	A 241 21	1800	680	320	1000	1260	1525	345	1521	1330	5,0	1930	32,2	23,5	6/4"/545	180/450	212
HRS 500	A 245 32	1806	760	350	1040	1290	1500	370	1498	1360	6,0	1970	39,6	29,7	6/4"/685	180/530	254

ETE: Installation depth Screw-in heating sleeve for SH heating

ETF: Flange installation depth (for built-in heating or finned tube heat exchanger)

**High-performance
heatpump tank (10 bar)**

HRS

750 / 900 LITRE



“

The double-wound smooth-tube heat exchanger offers particularly high transfer

high transfer rates and makes this heat generator the first choice for low-energy houses or heat pump systems.

”

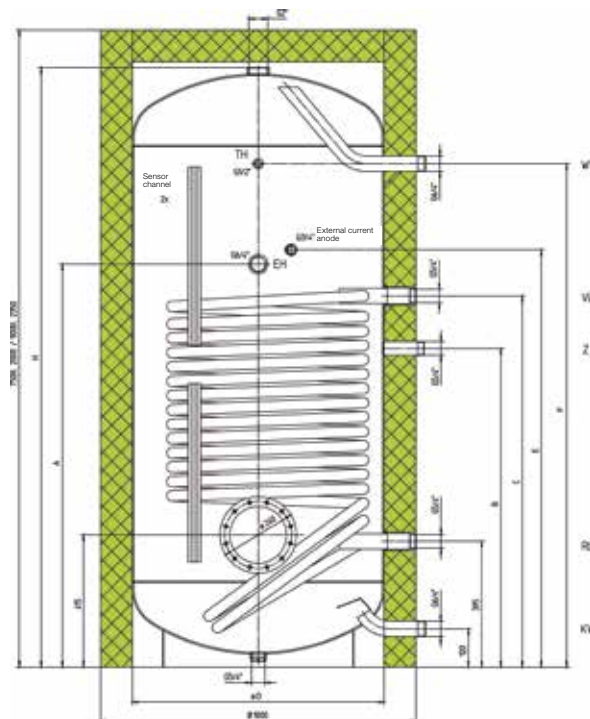
HIGH PERFORMANCE HEAT PUMP TANK

TECHNICAL DATA

- Operating pressure: max. 10 bar
- Capacity: 750 L, 900 L
- 100 mm ECO SKIN insulation
- Smooth-tube heat exchanger with particularly large heating surfaces
- Circulation: 5/4"
- Variable sensor position (sensor channel)
- High-quality dial thermometer mounted
- With mounted external current anode
- 6/4" socket for screwed radiator „SH“ for electrical reheating (closed)

ACCESSORIES

- Mounted thermometer-charge pump-controller combination ATR
- Flange-mounted heater Ø 240 mm
- Screw-type heating element 6/4", type series „SH“
- Finned tube heat exchanger
- For further information, please see our accessories brochure



ECO DESIGN-LABELING

**10 YEARS WARRANTY
ON THE INNER BOILER**

Type	Heat loss according to EN 12897		Tapping profile	Energy efficiency class
	in kWh/24h	S in watts		
HRS 750	2,56	106,7	3XL	C
HRS 900	2,87	119,6	4XL	C

TECHNISCHE DATEN

Type	Article no.	Dimensions in mm								Heat exchanger surface m ²	Tilt-dimension in mm	Content Pipe register in l	NL number according to DIN 4708	ETE in mm	ETF in mm	Weight in kg
		H	H with insulation	D _Ø	A	B	C	E	F							
HRS 750	A 313 24	1882	2000	790	1265	1000	1165	1165	1580	6,0	1960	39,6	38,8	6/4"/850	240/680	317
HRS 900	A 315 26	2228	2350	790	1445	1180	1345	1345	1920	7,5	2300	49,7	47,6	6/4"/850	240/680	374

ETE: Installation depth Screw-in heating sleeve for SH heating

ETF: Flange installation depth (for built-in heating or finned tube heat exchanger)