

**Trapezoidal register horizontal tank
(10 bar)**

LSP

150 / 200 / 350

500 LITER

“

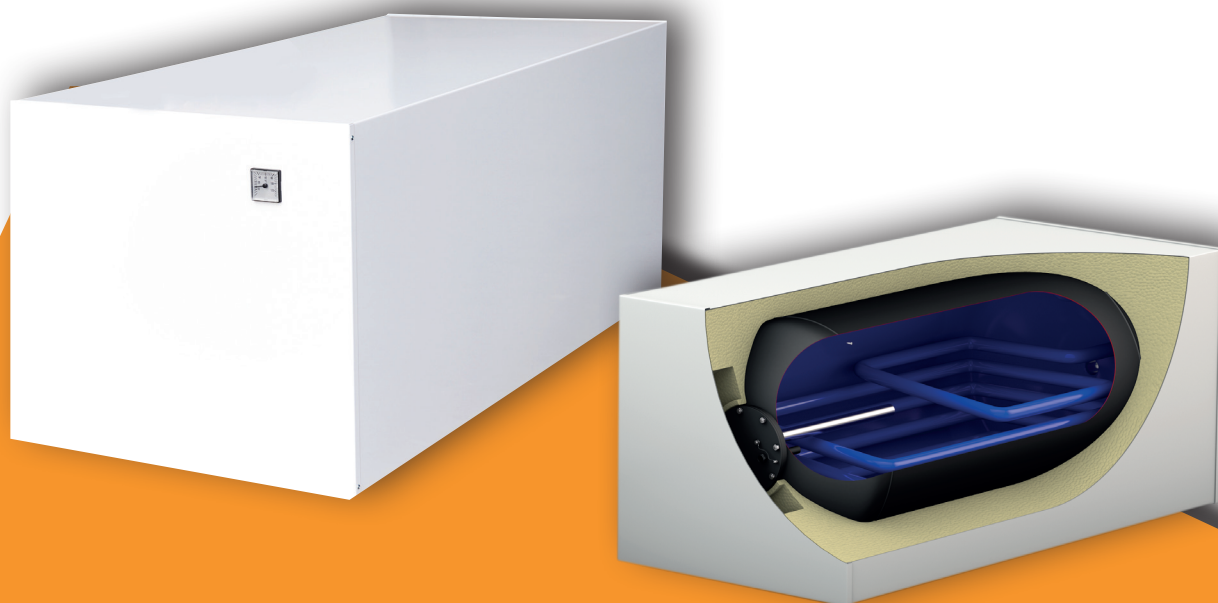


Storage tanks are designed for special space conditions in the heating cellar.



Direct installation of the boiler on the cylinder is also possible.

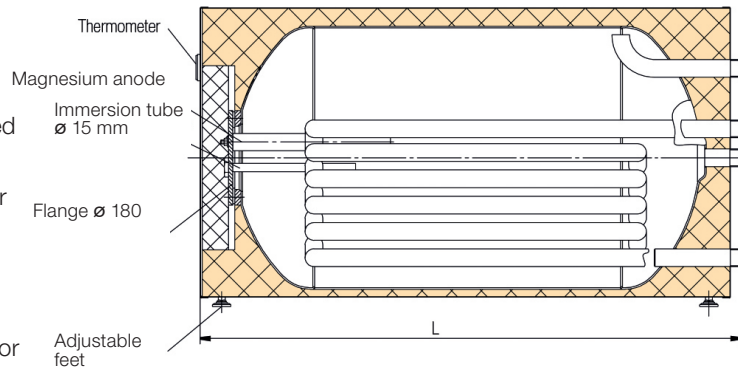
”



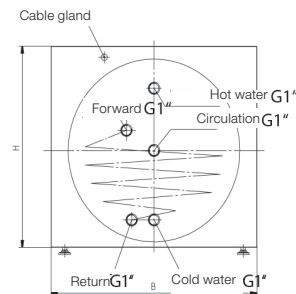
TRAPEZOIDAL REGISTER HORIZONTAL TANK

TECHNICAL DATA

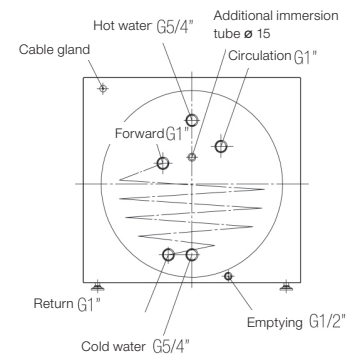
- Operating pressure 10 bar
- Capacity: 150 L, 200 L, 350 L, 500 L
- The horizontal storage types have a directly foamed inner tank with removable outer cladding.
- Stove-enamelled, powder-coated sheet steel outer casing
- High-quality dial thermometer fitted
- Cable gland available
- For inspection and cleaning purposes, as well as for inserting the anode and immersion sleeve for the thermometer and control sensor, this unit is equipped with a 180 mm Ø flange on one end.
- Drainage via cold water pipe
- Cold and hot water connections as well as the flow and return are provided with external threads
- SVGW and CE certified
- The trapezoidal pipe register enables optimum water stratification and is self-venting and self-draining.



Connection diagram for LSP 150 and 200



Connection diagram for LSP 350 and 500



ACCESSORIES

- External current anode retrofit kit for LSP 150 and LSP 200

ECO DESIGN-LABELING

✓ 5 YEARS WARRANTY

Type	Heat loss according to EN 12897		Tapping profile	Energy efficiency class
	in kWh/24h	S in watts		
LSP 150/1,0	1,26	52,5	L	B
LSP 200/1,3	1,45	60,4	XL	B
LSP 350/1,6	1,39	57,9	XXL	B
LSP 500/2,0	1,84	76,7	3XL	B

TECHNISCHE DATEN

Type	Article.no.	Dimensions in mm			Heat exchanger surface m²	NL-Number according to DIN 4708	Register content in l	Max. load capacity (due to attached boiler) in kg	Weight in kg
		H	B	L					
LSP 150/1,0	A 271 11	550	600	1030	1,0	2,7	5,2	300	95
LSP 200/1,3	A 274 65	550	600	1295	1,3	4,9	6,7	300	114
LSP 350/1,6	A 277 24	750	750	1450	1,6	9,0	10,2	900	215
LSP 500/2,0	A 278 28	752	752	1750	2,0	16,0	12,7	900	251