

**Floor standing water heater
(10 bar)**

HT FM

200 / 300 /

400 / 500 LITRE

“

For optimum heating of the storage tank contents, a 180 mm flange is fitted for the installation of a built-in electric heater.

”



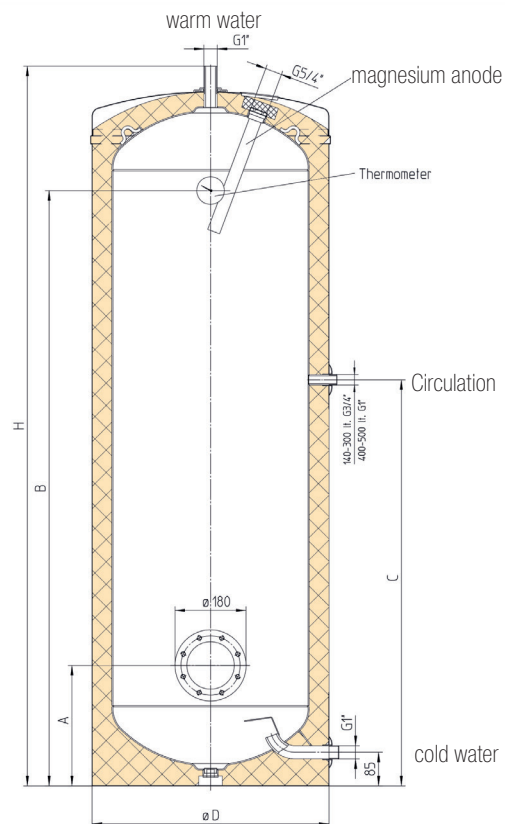
FLOOR STANDING WATER HEATER

TECHNICAL DATA

- Operating pressure 10 bar
- Capacity: 200 L, 300 L, 400 L, 500 L
- High-quality dial thermometer mounted
- Stove enamelled, powder-coated
- White sheet steel outer jacket
- 180 mm flange for installation of an electric built-in heater or a finned tube heat exchanger (RWT) for optimum heating of the storage tank contents
- Circulation connection: 3/4" ET (200 - 400 l) and 1" ET (500 l)
- Water connections 1" ET

ACCESSORIES (OPTIONAL)

- Built-in heating
- Finned tube heat exchanger (RWT)
- External current anode can be retrofitted



ECO DESIGN-LABELING

7 YEARS WARRANTY ON THE INNER BOILER

Type	Heat loss according to EN 12897		Tapping profile	Energy efficiency class
	in kWh/24h	S in watts		
HT 200 FM	1,37	57,1	XL	B
HT 300 FM	2,19	91,3	XXL	C
HT 400 FM	2,45	102,1	XXL	C
HT 500 FM	2,72	113,3	3XL	C

TECHNICAL DATA

Type	Article no.	Dimensions in mm					Tilt dimension in mm	Weight in kg
		H	D ϕ	A	B	C		
HT 200 FM	A 203 12	1340	600	305	1050	748	1400	103
HT 300 FM	A 205 10	1797	600	305	1507	1028	1835	124
HT 400 FM	A 207 37	1835	670	345	1513	1090	1885	154
HT 500 FM	A 208 14	1838	750	425	1498	1020	1910	173