

Floor standing water heater (10 bar)

VS EU

200 / 300 / 400 /

500 LITRE



“

Low energy loss due
to high-quality thermal
insulation!

”

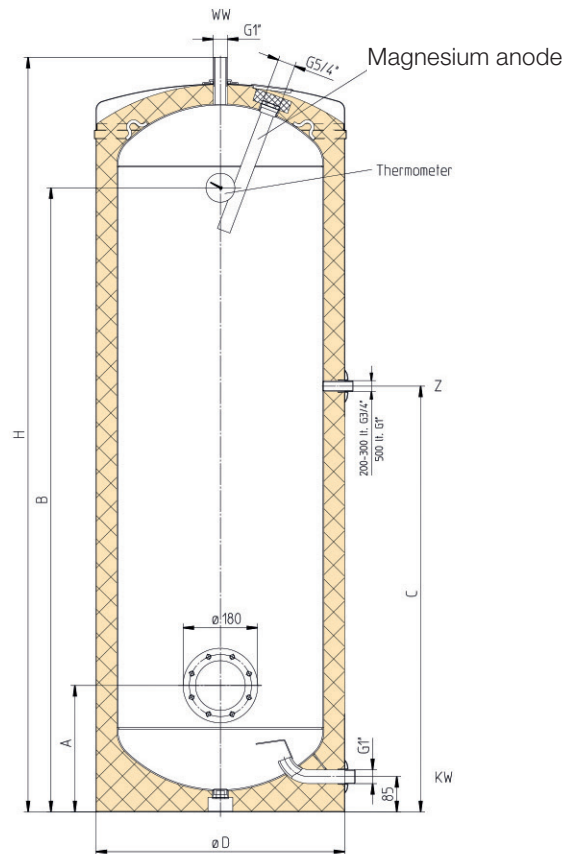
FLOOR STANDING WATER HEATERS

TECHNICAL DATA

- Operating pressure 10 bar
- Capacity: 200 L, 300 L, 400 L, 500 L
- Drainage via cold water pipe
- Cold and hot water connection 1".
- With protective anode, insulated built-in heating elements and protective current leakage resistor for optimum corrosion protection.

ACCESSORIES

- Flow-through safety check valve
- DL-SVRV with 3/4" connection for 6 bar



ECO DESIGN-LABELING

7 YEARS WARRANTY ON THE INNER BOILER

Type	Content in l	Heat loss according to EN 12897		Tapping profile	Energy efficiency class
		in kWh/24h	S in watts		
VS 200 EU	200	1,67	69,6	L	C
VS 300 EU	300	2,19	91,3	XL	C
VS 400 EU	400	2,45	102,1	XL	C
VS 500 EU	500	2,72	113,3	XL	C

TECHNICAL DATA

Type	Article.no.	Reconnectable heating capacities in kW					Dimensions in mm					Anode	Tilt dimension in mm	Weight in kg
		~ 230V		3~400V			H	øD	A	B	C			
		8h	6h	4h	6h	8h								
VS 200 EU	A 213 07	2,0	2,7	4,0	-	-	1340	610	305	1050	748	ø 33 x 300	1420	99
VS 300 EU	A 215 08	-	-	6,0	4,0	3,0	1797	610	305	1507	1028	ø 33 x 350	1870	132
VS 400 EU	A 217 40	-	-	8,0	5,0	4,0	1835	680	345	1513	1090	ø 33 x 430	1885	162
VS 500 EU	A 218 05	-	-	10,0	6,5	5,0	1838	760	425	1498	1020	ø 33 x 480	1920	176

fettgedruckte Leistungen sind werkseitig geschaltet