



Domestic hot water heat pump  
**EXPLORER EVO2**



# Domestic hot water heat pump

## EXPLORER EVO2

The Austria Email EXPLORER EVO2 domestic hot water heat pump stands out with its energy efficiency, durability, TOP control and, above all, even easier handling thanks to the improved connection situation.

### ADVANTAGES

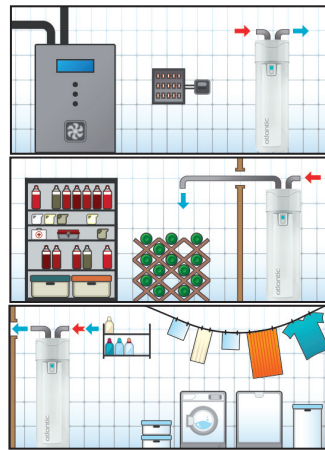
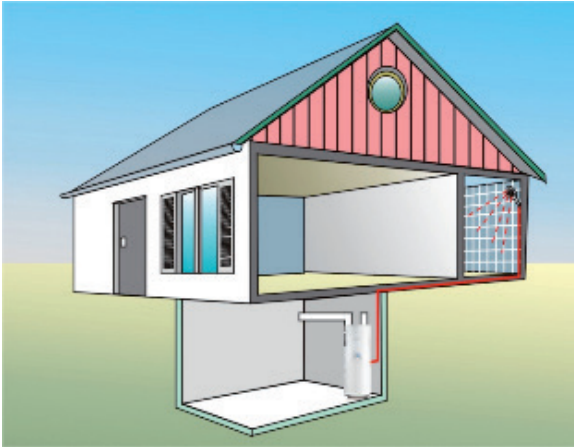
- ✓ Protected against scaling by steatite dry heating element
- ✓ Maintenance-free ACI impressed current anode
- ✓ Intelligent photovoltaic boost function with two interfaces
- ✓ Generously dimensioned heat exchanger for the installation of additional energy generators
- ✓ Large display with energy consumption indicator
- ✓ Smart Control - adaptation to individual usage behavior
- ✓ Simple assembly and installation
- ✓ Selection of the most economical energy source depending on the outside temperature
- ✓ Low space and ceiling height requirements thanks to 360° rotatable air connection spigots
- ✓ With circulation connection
- ✓ Horizontal heat exchanger connections
- ✓ Horizontal transportation possible



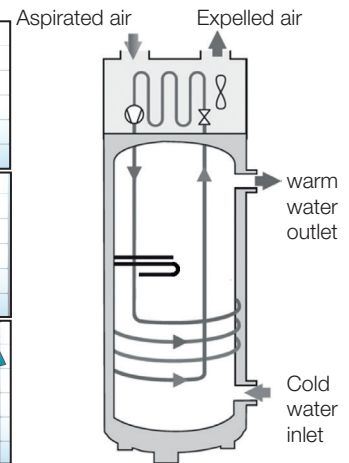
# Domestic hot water heat pump

## EXPLORER EVO2

The domestic hot water heat pumps are extremely robust, durable and easy to integrate into the existing house. Rotatable exhaust air or intake ducts can draw in warm air and discharge cold air wherever this is advantageous.



Possible areas of application  
Installation sites



### AUSTRIA EMAIL IS WORTH IT BECAUSE...

- ✓ ... the very quiet operation - max. 53 dB (A)\* - ensures a high level of living comfort.
- ✓ ... the ACI impressed current anode and the patented stearite dry heating element make the appliance durable and maintenance-free.
- ✓ ... you can connect your PV power simply and smartly thanks to the "SG-Ready" standard.

\* Sound power level measured directly at the appliance



## Domestic hot water heat pump

# Technical data

		200 L	270 L
Dimensions (HxBxT)	mm	1.617x620x655	1.957x620x655
Tilting dimension	mm	1.750	2.070
Unladen weight (model without heat exchanger)	kg	80	92
Unladen weight (model with heat exchanger)	kg	97	111
Hot and cold water connection		3/4" M	
Heat exchanger connection		1" M	
Coil heat exchange surface	m <sup>2</sup>	1,2	
Heat exchanger capacity at 60°C	kW	16	
Corrosion protection		Maintenance-free ACI Hybrid impressed current anode	
Nominal pressure Dimensions	bar	8	
Electrical connection (voltage/frequency)	V/Hz	230 V single-phase 50 Hz	
Maximum power consumption of the appliance	W	2500	
Maximum power consumption of the heat pump	W	700	
Power consumption of electric auxiliary heating	W	1800	
Setting range of the hot water temperature for heat pump operation	°C	40 to 62	
Application range of the heat pump (air temperature range)	°C	- 5 to + 43	
Diameter of air duct connection	mm	160	
Air flow rate (without air duct connection) Speed 1	m <sup>3</sup> /h	310	
Air flow rate (without air duct connection) Speed 2	m <sup>3</sup> /h	390	
Reliability Pressure drop in the air circuit without power reduction	Pa	25	
Sound power level	dB(A)	53	
Sound power level at 2m without obstacles	dB(A)	33	
Refrigerant quantity R513A	kg	0,80	0,86
Additional heating element	kW	1,8	1,8
COP values according to EN 16147 without WT (A7/A15/A20)		2,79 / 3,05 / 3,24	3,16 / 3,51 / 3,78
COP values according to EN 16147 with WT (A7/A15/A20)		2,79 / 3,11 / 3,3	3,03 / 3,47 / 3,78



OPTIONALLY AVAILABLE

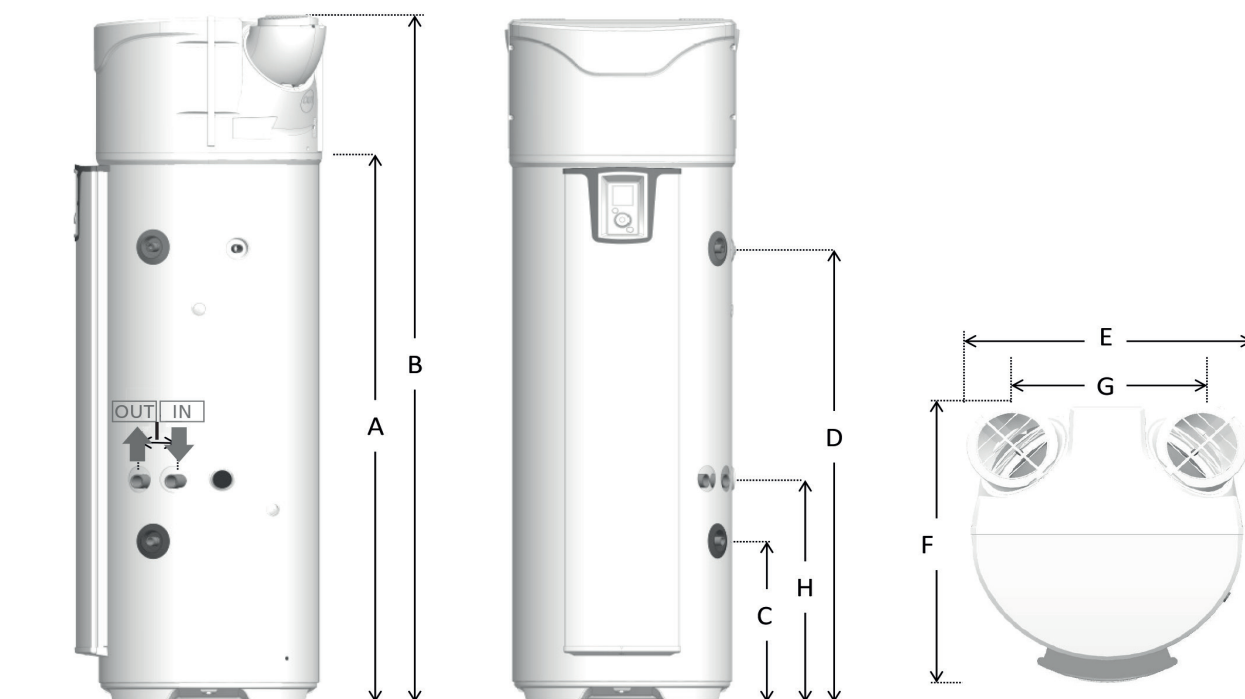
## COZYTOUCH BRIDGE

**A simple solution for controlling heating comfort throughout the house.**

The Cozytouch Bridge allows you to control your networked devices. You can download the Cozytouch app free of charge from the Appstore or Google Play.

# Domestic hot water heat pump

## Technical data



Type		EXPLORER EVO2 200L without WT	EXPLORER EVO2 200L with WT	EXPLORER EVO2 270L without WT	EXPLORER EVO2 270L with WT
Article no.		D41185	D41184	D41187	D41186
Storage capacity	L	200	200	270	270
Energy efficiency class		<b>A+</b>	<b>A+</b>	<b>A+</b>	<b>A+</b>
Tap profile		L	L	XL	XL
<b>Dimensions</b>					
Condensate drain (A)	mm	1.166	1.166	1.525	1.525
Total height (B)	mm	1.617	1.617	1.957	1.957
Cold water connection (C)	mm	304	462	304	462
Hot water/circulation connection (D)	mm	961	961	1.300	1.300
Total width (E)	mm	620	620	620	620
Total depth (F)	mm	665	665	665	665
Center distance openings (G)	mm	418	418	418	418
Heat exchanger connection (H)	mm	-	640	-	640
Distance heat exchanger connection (I)	mm	-	104	-	104

\* 5 m from the device, 1.5 m from the floor, orientation Q2; at nominal output in night mode, hemispherical calculation  
Subject to dimensional and design changes

# Domestic hot water heat pump EXPLORER EVO2



Head office: Austria Email AG,  
Austriastraße 6, 8720 Knittelfeld  
Tel. (03512) 700-0  
E-Mail: [office@austria-email.at](mailto:office@austria-email.at)  
Internet: [www.austria-email.com](http://www.austria-email.com)

